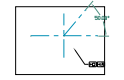
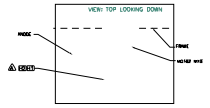
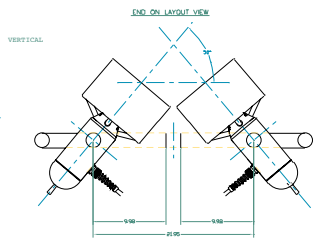
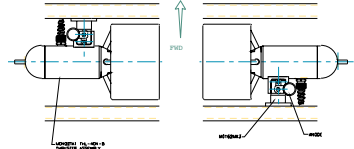
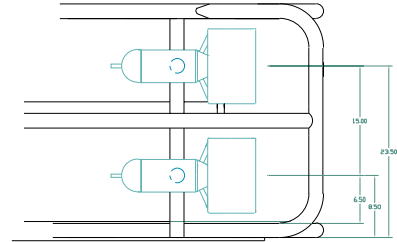
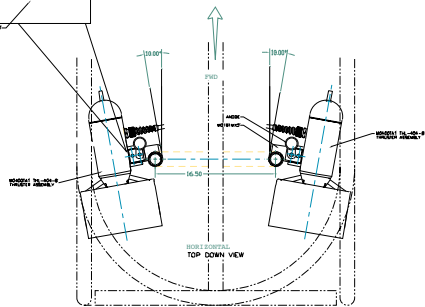
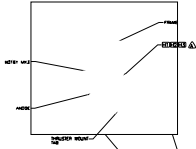


8 7 6 5 4 3 2 1

ITEM NO.	DESCRIPTION	QTY	UNITS
----------	-------------	-----	-------



VIEW: STARBOARD THRUSTER MOUNT FORWARD LOOKING AFT



GENERAL MOUNTING ARRANGMENT

ASSEMBLY NOTES

- ⚠️ USE AQUALUBE ON ALL STAINLESS STEEL HARDWARE DURING ASSEMBLY/DISASSEMBLY. THIS WILL PREVENT SEIZING OF THE HARDWARE OR GALVANIA.
- ⚠️ USE #242 MEDIUM BLUE LOCTITE, COVER ALL THREADS
- ⚠️ USE LOCTITE GAS HYDRAULIC/ PNEUMATIC THREAD SEALANT, COVER ALL THREADS.
- ☑️ CLEAN AND DEGRASS ALL O-RINGS AND O-RING SURFACES, THEN LIGHTLY LUBRICATE WITH KODOLINE SA-0 O-RING LUBE, OR EQUIVALENT PRODUCTS.
- 1. ALL HARDWARE IS TO BE 316 STAINLESS STEEL.
- 2. LOCKING HARDWARE SHOULD BE THE INSIDE NUTS OF SET & LOCKWASHERS.
- 3. DO NOT USE ONLY ONE 1/2 THREAD SPACING FROM THE END OF THE NOZZLE NUT, USE EACH END ONLY ONES.
- 3. DO NOT USE AQUALUBE AND #242 MEDIUM BLUE LOCTITE ON THE SAME HARDWARE.

ITEM NO.	DESCRIPTION
1	THRUSTER
2	NOZZLE NUT
3	NOZZLE SEALANT

8 7 6 5 4 3 2 1

D

C

B

A